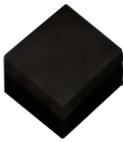


P1.667 Indoor 1/30 Scan 400x300mm Die-Cast Aluminum HD LED Display

Model No.: P1.667-HD30S-SMD1010-120x90-L400xH300

LED Lamp Specification					
					
Color	Package	Intensity	Viewing Angle	Wavelength	Testing Conditions
Red	SMD1010	15-25mcd	120°	620-625nm	25°C,5mA
Green		45-70mcd	120°	515-530nm	25°C,5mA
Blue		5.5-10mcd	120°	465-475nm	25°C,3mA
Module Parameter					
Pixel Pitch		1.667mm			
Pixel Configuration		SMD1010			
Density		360,000 pixels/m ²			
Module Resolution		120pixel(L) *90pixel(H)			
Module Dimension		200mm(L) * 150mm(H) * 18mm(D)			
Driving Mode		Constant current, 1/30 duty			
LED Cabinet					



Module Quantity in a Cabinet	2(L) *2(H)
Cabinet Dimension	400(L)*300(H)* 80(D)mm
Cabinet Resolution	240(L)*180(H)

Tel: +86-755-32930690

Fax: +86-755-32930691

E-mail: manager@eagerled.com

Website: <http://www.eagerled.com>

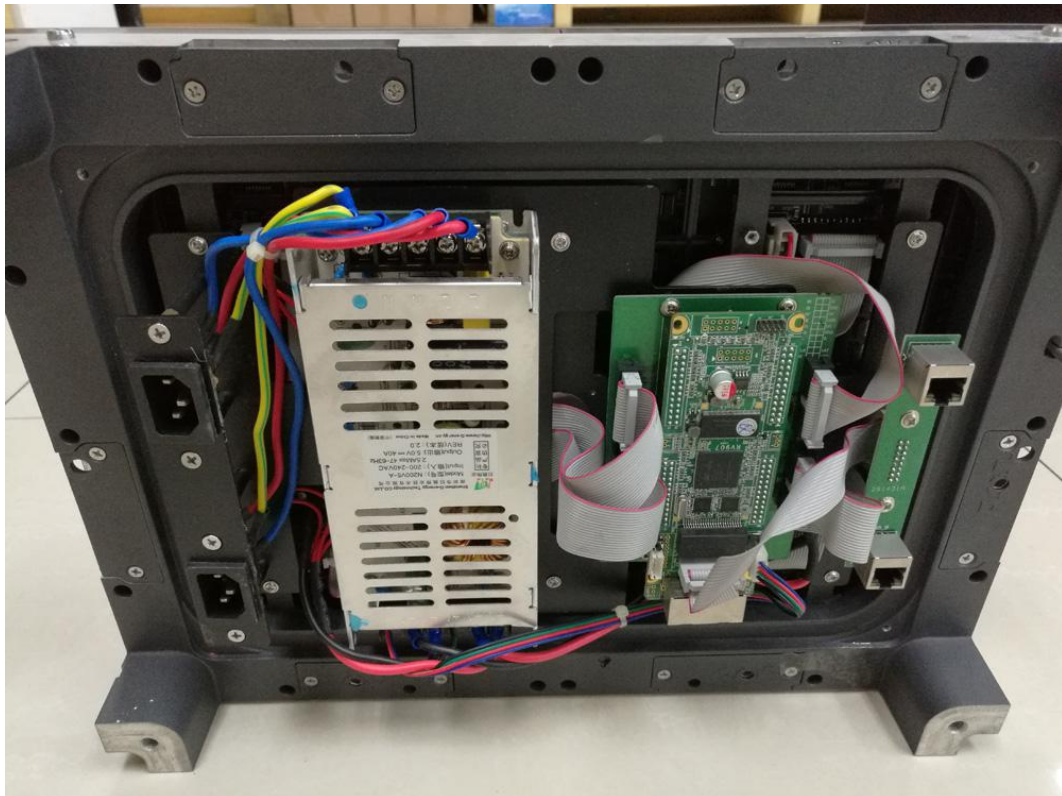
Address: No.257, Shangwu Avenue, Tianxin Community, Shiyan Town, Bao'an District, Shenzhen, China 518108

Cabinet Material	Die-cast aluminum;
Cabinet Weight	≈3.5KG
Electricity Parameter	
Optical Ratings	
Brightness	≥1,000 cd/m ²
Viewing Angle	120°(Horizontal); 120°(Vertical)
Best Viewing Distance	≥1m
Gray Grade	14 bits
Display Color	4.4 trillion colors
Brightness Adjustment	100 grades by software or automatically by sensor
Operation Power	AC100-240V 50-60Hz Switchable
Max. Power Consumption	1250 W/m ²
Avg. Power Consumption	420W/m ²
Control System	
Frame Frequency	≥60Hz
Refresh Frequency	≥1,920Hz
Input Signal	Composite Video, S-video, DVI, HDMI, SDI, HD-SDI
Control Distance	100m(Ethernet cable); 20KM(optical fiber cable)
Support VGA Mode	800*600, 1024*768, 1280*1024, 1600*1200
Color Temperature	5000—9300 adjustable
Brightness Correction	Pixel by pixel, module by module, cabinet by cabinet
Reliability	
Working Temperature	-20~+60 °C
Storage Temperature	-30~+70 °C
Working Humidity	10%~90% RH
Lifetime	100,000 hours
MTBF	5000 hours
Continuous Operating Time	≥72 hours
Protection Grade	IP31
Out-of-Control Pixel Rate	≤0.01%
Cabinet Details	









Package

