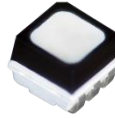


P10 Outdoor 1/4 Scan SMD3535 320x160mm LED

Module Specification

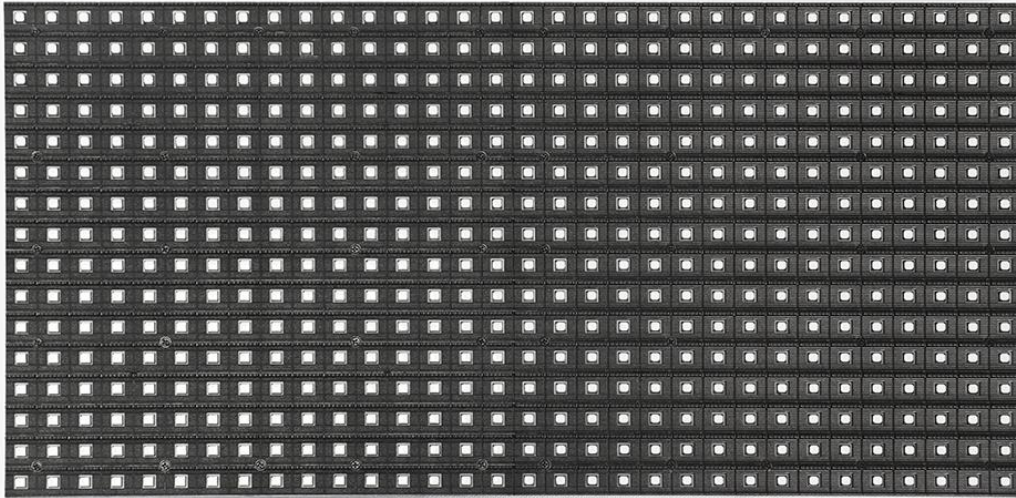
Model No.: **P10-O4S-SMD3535-32x16**

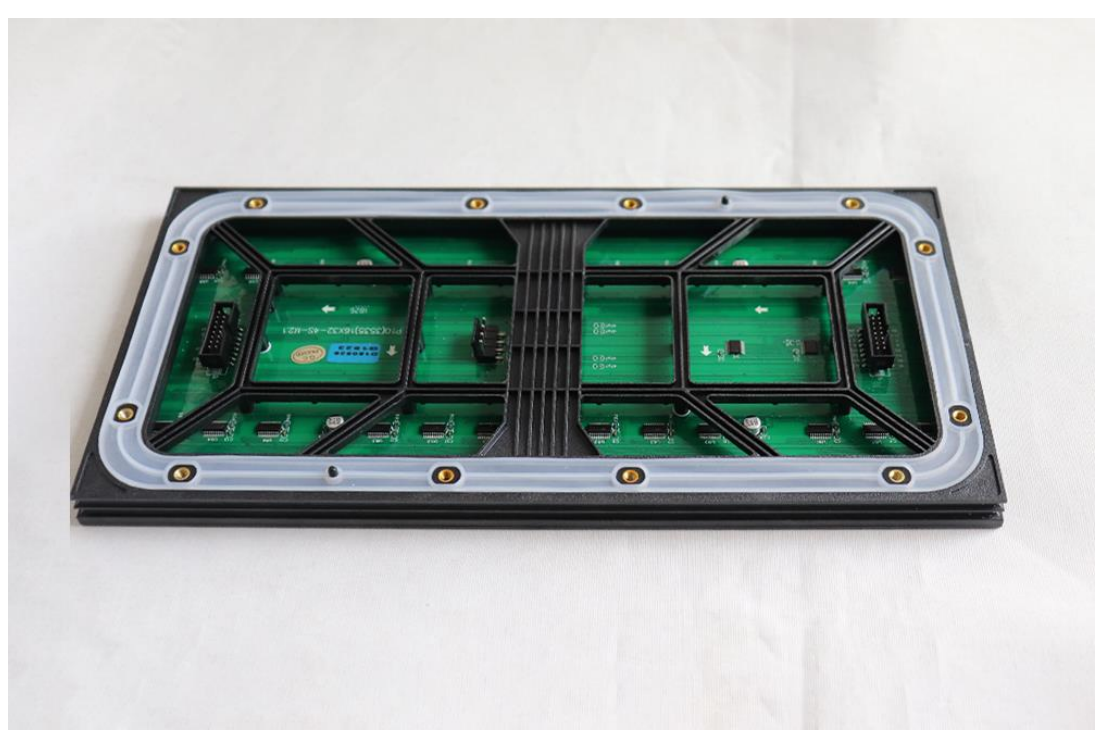
LED Lamp Specification



Color	Package	Intensity	Viewing Angle	Wavelength	Testing Conditions
Red	SMD3535	600mcd	120°	622nm	25°C,20mA
Green		1350mcd	120°	520nm	25°C,20mA
Blue		280mcd	120°	470nm	25°C,20mA

Module Photo





Module Parameter

Pixel Pitch	10mm
Pixel Configuration	SMD3535
Density	10,000 pixels/m ²
Module Resolution	32pixel(L) * 16pixel(H)
Module Dimension	320mm(L) * 160mm(H) *25mm(D)
Driving Mode	Constant current, 1/4 duty
Module Mask	Pure black mask---high contrast screen

Electricity Parameter

Optical Ratings

Brightness	≥6,000 cd/m ²
Viewing Angle	120°(Horizontal); 120°(Vertical)
Best Viewing Distance	≥10m
Gray Grade	14 bits
Display Color	4.4 trillion colors
Brightness Adjustment	100 grades by software or automatically by sensor
Max. Power Consumption	28 W

Control System

Frame Frequency	≥60Hz
Refresh Frequency	≥3,840Hz
Input Signal	Composite Video, S-video, DVI, HDMI, SDI, HD-SDI
Control Distance	100M (Ethernet cable); 20KM (Optical fiber cable)
Support VGA Mode	800*600, 1024*768, 1280*1024, 1600*1200

Color Temperature	5000—9300 adjustable
Brightness Correction	Pixel by pixel, module by module, cabinet by cabinet
Reliability	
Working Temperature	-20~+60 °C
Storage Temperature	-30~+70 °C
Working Humidity	10%~90% RH
Lifetime	100,000 hours
MTBF	5000 hours
Continuous Operating Time	≥72 hours
Protection Grade	IP65
Out-of-Control Pixel Rate	≤0.01%

Package

